



2023 - 2024

SEEDLING CATALOG

TREE & SHRUB SEEDLINGS FOR CONSERVATION

<https://ag.ok.gov/seedling-store>





ORDERING INFORMATION

About The Seedlings

OFS sells bare-root and containerized seedlings. Bare-root seedlings are seedlings with uncovered roots, which require extra care to keep the roots moist. Containerized seedlings are grown in small tubes. All seedlings are one or two years old, and are grown to allow for quick planting. OFS offers seedlings from January to late March. All orders are on a first-come, first-served basis. Customers are encouraged to order early, as supplies are limited and some species will sell out. For more information or assistance, please call the Forest Regeneration Center at (405) 288-2385, ext. 101.

Conditions of Sale

Oklahoma Forestry Services grows and sells seedlings for conservation purposes only. They cannot be resold as live plants. Violation of these conditions will result in a \$50/tree penalty and/or loss of opportunity to purchase seedlings for up to 5 years. By purchasing these seedlings, you are accepting agreement of the above “Conditions of Sale.”

Ordering and Payment

You can order seedlings online at <https://ag.ok.gov/seedling-store> or by phone at (405) 288-2385, ext. 101. Bare-root seedlings are sold in bundles of 50 and the minimum order is 100. Minimum orders for containers are 50 for evergreens and 25 for hardwoods. Credit card orders assume the cardholder agrees to advance payment in amount of the grand total and to perform obligations set forth in the Cardholder’s agreement with the issuer.

Cancellations and Refunds

Orders cancelled before January 1, will be refunded less a \$20.00 processing fee (allow 4 to 6 weeks for refund). No refunds will be made after January 1st.

Receiving Orders

Pick-up orders are available on Fridays at FRC only. Customers will be notified one week before. If seedlings are not picked up within 2 weeks of notice, survivability will be affected.

The FRC is located four miles south of Norman. Take the Goldsby/Washington Exit (104) from I-35 and follow the posted signs. The FRC is just south and east of the David Perry Airport, east of I-35.

All shipped orders are delivered by FedEx. Shipping fees depend on the number of seedlings you order. Please contact FRC for shipping calculation. An email will be sent to customers when their seedlings are shipped from FedEx. If your order is not received within seven days of email, customers are asked to call the Forest Regeneration Center. **We do not ship containerized seedlings. Containerized seedlings must be picked up at FRC.**

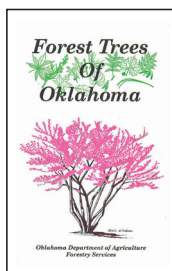
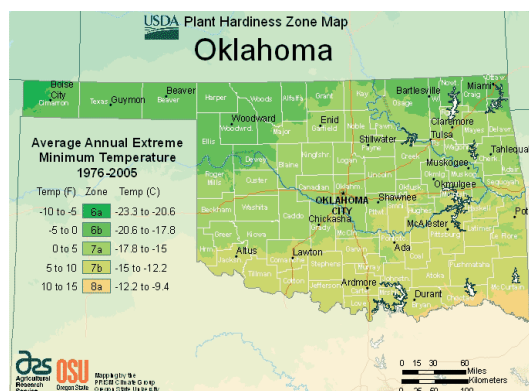
SPECIES SELECTION

Oklahoma Forestry Services recommends planting the right tree in the right place. Conditions that must always be considered are: the reason/purpose for planting the tree, type of soil, hardiness zone and amount of annual rainfall.

USDA Hardiness Zones

The primary guide to determine plant hardiness is the USDA Hardiness Zone Map, which divides the United States into ten zones based on average minimum temperatures. Each zone is then subdivided into A and B sections. A plant is said to be hardy if it can tolerate the lowest average winter temperature that occurs in a zone. Hardiness is affected by duration and intensity of sunlight; amount and timing of rainfall; length and severity of summer drought; soil characteristics; slope; frost occurrence; humidity; and cultural practices.

For more information or questions contact your nearest forester for advice. See back page for contact information.



Forest Trees of Oklahoma

by Dr. Elbert Little

- If you pick it up, the cost is \$4.00.
- If we mail it to you, the cost is \$8.00.

CONSERVATION PACKAGES

We are offering three conservation improvement packages this year. Each package contains 25 seedlings of four different species for a total of 100 seedlings. These trees and shrubs were selected specifically to enhance conservation practices on your property. Some species will be substituted by FRC if a species is not available.

Choose from 3 Different Packages:

DEER HABITAT PACKAGE

(Osage Orange, Persimmon, Sand Plum, and Sawtooth Oak)

RURAL WILDLIFE HABITAT PACKAGE

(Red Mulberry, Shumard Oak, Smooth Sumac, and Fragrant Sumac)

POLLINATOR PACKAGE

(Roughleaf Dogwood, Red Mulberry, American Plum, and Sand Plum)

All Conservation Packages are \$125.00.

BARE-ROOT SEEDLINGS

- Minimum bare root seedling order is 100 seedlings. Seedlings are sold in bundles of 50.
- Orders of 50 to 450 seedlings, seedling cost is \$1.00 each.
- Orders of 500 to 950 seedlings, seedling cost is \$0.60 each.
- Orders of 1,000 to 3,000 seedlings, seedling cost is \$0.50 each.
- Orders of more than 3,000 seedlings, seedling cost is \$0.45 each.

S=SUPERIOR G=GOOD F=FAIR P=POOR E=EAST W=WEST C=CENTRAL

PLANTING CONDITIONS

COMMON USES

Common Name (Scientific Name)	Hardiness Zones	Moisture Zones	Tolerates Soil Type	Height At Maturity	Windbreak	Erosion Control	Wildlife
Arborvitae (<i>Thuja orientalis</i>)	4-7	All	Dry, Clay	30-45'	S	P	S
Baldcypress (<i>Taxodium distichum</i>)	5-10	All, but Panhandle	Clay & Silt	60-100'	F	G	G
Dogwood, roughleaf (<i>Cornus drummondii</i>)	5-8	E, C	Most	8-10'	G	G	S
Elm, lacebark (<i>Ulmus parvifolia</i>)	4-10	All	All	40-50'	S	G	G
Hackberry (<i>Celtis occidentalis</i>)	3-9	All	Most	40-70'	S	G	S
Juniper, Rocky Mnt. (<i>Juniperus scopulorum</i>)	3-7	All	Dry	25-30'	S	P	G
Locust, black (<i>Robinia pseudoacacia</i>)	4-10	All, but Panhandle	All	35-40'	G	S	G
Mulberry, red (<i>Morus rubra</i>)	4-9	E, C	Most	40-60'	S	F	S
Oak, bur (<i>Quercus macrocarpa</i>)	3-9	All	Most	40-80'	G	F	S
Oak, chinkapin (<i>Quercus muehlenbergii</i>)	3-9	All	All	40-60'	G	F	S
Oak, pin (<i>Quercus palustris muench</i>)	4-8	E, C	Most	60-70'	G	F	S
Oak, post (<i>Quercus stellata</i>)	6-9	All	All	40-70'	G	F	S

BARE-ROOT SEEDLINGS

S= SUPERIOR G=GOOD F=FAIR P=POOR E=EAST W=WEST C=CENTRAL

Common Name (Scientific Name)	PLANTING CONDITIONS				COMMON USES		
	Hardiness Zones	Moisture Zones	Tolerates Soil Type	Height At Maturity	Windbreak	Erosion Control	Wildlife
Oak, shumard (<i>Quercus shumardii</i>)	3-9	All, but Panhandle	Most	100-120'	G	F	S
Oak, sawtooth (<i>Quercus acutissima</i>)	4-9	E, C	Most	50-60'	G	F	S
Oak, white (<i>Quercus alba</i>)	4-9	Most	Acidic Soils	70-90'	G	F	S
Osage Orange (<i>Maclura pomifera</i>)	5-9	All	Moist	40-60'	G	G	S
Pecan, native (<i>Carya liliensis</i>)	5-9	E, C	Needs Deep Soil	80+	G	P	S
Persimmon (<i>Diospyros virginiana</i>)	4-9	All, but Panhandle	Moist	40-60'	S	G	S
Pine, loblolly (<i>Pinus taeda</i>)	6-10	All, but Panhandle	Most	80-100'	F	F	F
Pine, ponderosa (<i>Pinus ponderosa</i>)	5-7	C, W	Dry	40-60'	S	F	G
Pine, shortleaf (<i>Pinus echinata</i>)	5-9	E, C	Sandy - Rocky	60-85'	S	F	G
Pine, Virginia (<i>Pinus virginiana</i>)	4-8	All	Dry	40-80'	G	F	G
Plum, American (<i>Prunus americana</i>)	3-8	All	Dry, Clay	15-20'	G	G	S
Plum, sand (<i>Prunus angustifolia</i>)	6-8	All	Dry, Moist	8-10'	P	G	S
Redbud, eastern (<i>Cercis canadensis</i>)	4-9	All, but Panhandle	All	25-40'	F	F	G
Sumac, Fragrant (<i>Rhus aromatica</i>)	5-9	All	Dry	6-10'	S	G	G
Sumac, smooth (<i>Rhus glabra</i>)	3-9	All	Dry	10-15'	S	G	S
Sumac, winged (<i>Rhus copallinum</i>)	4-9	All	Dry	15-20'	S	G	S
Sweetgum (<i>Liquidambar styraciflua</i>)	5-9	E, C	Moist	60-75'	G	G	G
Sycamore (<i>Platanus occidentalis</i>)	4-9	E, C	Wet, Clay	70-100'	F	G	F
Walnut, black (<i>Juglans nigra</i>)	4-9	E, C	Moist, Well Drained	80-100'	F	G	S

CONTAINERIZED SEEDLINGS

EVERGREEN CONTAINERS

Seedlings are grown in tubes that are 2 inches in diameter and 7.5 inches long. These seedlings are especially well-suited for plantings on harsher sites and should provide better survival than bare-root seedlings. The table below shows species available with descriptions and recommended usage. Containerized Species are \$2.00 per seedling. Minimum order is \$100.00. Seedlings are only sold in single species flats of 50. These seedlings are only available to pickup after March 1 at FRC.

Common Name	Hardiness	Moisture Zones	Tolerates Soil Type	Height At Maturity
Cypress, Arizona (<i>Cupressus arizonica</i>)	7-8	All	Most	40-60'
Pine, loblolly (<i>Pinus taeda</i>)	6-10	All, but Panhandle	Most	80-100'
Pine, ponderosa (<i>Pinus ponderosa</i>)	5-7	C, W	Dry	40-60'
Pine, shortleaf (<i>Pinus echinata</i>)	5-9	E, C	Sandy - Rocky	60-85'
Pine, Virginia (<i>Pinus virginiana</i>)	4-8	All	Dry	40-80'
Pine, Scotch (<i>Pinus edularica</i>)	2-7	All	Dry	40-60'
Pine, Mondel (<i>Pinus sylvestris</i>)	6-8	All	Dry	30-50'



HARDWOOD CONTAINERS

Hardwood containers are grown for conservation plantings on smaller acreages. If you are planting a windbreak, wildlife habitat or any other conservation planting, the seedlings are just the ticket. They are grown in containers that are 2 5/8 inches in diameter and 10 inches long. These seedlings are \$5.00 each and are only available in flats of 25 per species. The minimum order is 25 trees. A flat of 25 costs \$125. FRC does not ship containerized seedlings. Containerized seedlings must be picked up at FRC within 30 days of notice.

Common Name (Scientific Name)	Hardiness	Moisture Zones	Tolerates Soil Type	Height At Maturity
Mexican Plum (<i>Prunus mexicana</i>)	6-8	All, but Panhandle	Most	15-20'
Oak, bur (<i>Quercus macrocarpa</i>)	3-9	All	Most	40-80'
Oak, post (<i>Quercus muehlenbergii</i>)	6-9	All	All	40-70'
Oak, shumard (<i>Quercus shumardii</i>)	3-9	All, but Panhandle	Most	60-80'
Baldcypress (<i>Taxodium distichum</i>)	5-10	All, but Panhandle	Clay & Silt	60-100'
Sweetgum (<i>Liquidambar styraciflua</i>)	5-9	E, C	Moist	60-100'



SUPERIOR SOUTHERN YELLOW PINE GENETICS

The OFS Forest Tree Improvement Center (FTIC), located in Idabel, OK is home to 60 acres of superior pine genetic orchards. Since 1980, the FTIC has been focusing on loblolly, shortleaf, and Virginia pine genetics under the direction of the Western Gulf Forest Tree Improvement Program. These species have been studied and selectively bred to produce optimal seed for seedlings. We are offering landowners tailored options for their planting needs using our superior genetics. The following are the options for our Pine Genetics Program and are offered in quantities starting at 1000. For more information on each offering, please call the FRC and speak with the manager.

Improved Loblolly Pine

OFS will offer distinct categories of genetics geared for landowners' management needs. We have selected a variety of families with characteristics that focus on the end product at the mill. Depending on the landowner's objective, they can select the best option that fits their management plan and budget.

Saw log Loblolly

This category contains families that are suggested for trees that will be grown for saw log production.....\$80/1,000 seedlings

Diverse Loblolly

This category contains families that are suggested for trees that will be grown for ecosystem services production.....\$55/1,000 seedlings

Improved Shortleaf Pine

OFS will offer Improved Shortleaf Pine with characteristics that focus on timber utilization in forest plantations while having the adaptability to survive fire damage as a young seedling by forming new sprouts. Shortleaf Pine has the largest native range among our Southern Yellow Pine.

- 1,000-2,000 seedlings: \$500/1,000 seedlings
- 3,000+ seedlings: \$450/1,000 seedlings

Improved Virginia Pine

OFS will offer Virginia Pine which are geared for landowners looking for a seedling to plant on outside the natural range and is hardier and more drought-resistant for those harsher sites. They are also widely used for Christmas tree plantings throughout the state.

- 1,000-2,000 seedlings: \$500/1,000
- 3,000+ seedlings: \$450/1,000 seedlings



Oklahoma Forestry Services
 Forest Regeneration Center
 830 NE 12th Avenue
 Goldsby, OK 73093

PROTECTING THE FORESTS AND NATURAL RESOURCES OF OKLAHOMA FOR GENERATIONS TO COME

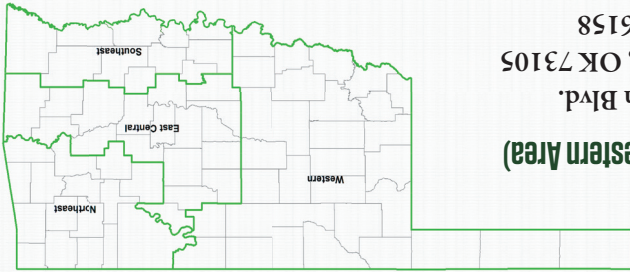
East Central Area (EC)
 P.O. Box 297
 Wilburton, OK 74578-0297
 Office 918.456.2082
 Fire 800.375.2056

Southeast Area (SE)
 P.O. Box 40
 Broken Bow, OK 74728-0040
 Office 580.584.3351
 Fire 800.299.2468

Northeast Area (NE)
 22082 South J.F. Davis Lane
 Tablequah, OK 74464-9805
 Office 918.456.6139
 Fire 800.299.3473

Forest Regeneration Center
 830 NE 12th Avenue
 Goldsby, OK 73093-9071
 Office 405.288.2385

State Offices (Western Area)
 2800 N. Lincoln Blvd.
 Oklahoma City, OK 73105
 Office 405.522.6158



ag.ok.gov/seedling-store

**FOR FORESTRY ASSISTANCE, PLEASE
 CALL THE OFFICE NEAR YOU.**

