



2024-2025

SEEDLING CATALOG

TREE & SHRUB SEEDLINGS FOR CONSERVATION

<https://ag.ok.gov/shop>





ORDERING INFORMATION

About The Seedlings

OFS sells bare-root and containerized seedlings. Bare-root seedlings are seedlings with uncovered roots, which require extra care to keep the roots moist. Containerized seedlings are grown in small tubes. All seedlings are one or two years old, and are grown to allow for quick planting. OFS offers seedlings from January to late March. All orders are on a first-come, first-served basis. Customers are encouraged to order early, as supplies are limited and some species will sell out. For more information or assistance, please call the Forest Regeneration Center at (405) 288-2385, ext. 101.

Conditions of Sale

Oklahoma Forestry Services grows and sells seedlings for conservation purposes only. They cannot be resold as live plants. Violation of these conditions will result in a \$50/tree penalty and/or loss of opportunity to purchase seedlings for up to 5 years. By purchasing these seedlings, you are accepting agreement of the above “Conditions of Sale.”

Ordering and Payment

You can order seedlings online at <https://ag.ok.gov/seedling-store> or by phone at (405) 288-2385, ext. 101. Bare-root seedlings are sold in bundles of 50 and the minimum order is 100. Minimum orders for containers are 50 for evergreens and 25 for hardwoods. Credit card orders assume the cardholder agrees to advance payment in amount of the grand total and to perform obligations set forth in the Cardholder’s agreement with the issuer.

Cancellations and Refunds

Orders cancelled before January 1, will be refunded less a \$20.00 processing fee (allow 4 to 6 weeks for refund). No refunds will be made after January 1st.

Receiving Orders

Pick-up orders are available on Fridays at FRC only. Customers will be notified one week before. If seedlings are not picked up within 2 weeks of notice, survivability will be affected.

The FRC is located four miles south of Norman. Take the Goldsby/Washington Exit (104) from I-35 and follow the posted signs. The FRC is just south and east of the David Perry Airport, east of I-35.

All shipped orders are delivered by FedEx. Shipping fees depend on the number of seedlings you order. Please contact FRC for shipping calculation. An email will be sent to customers when their seedlings are shipped from FedEx. If your order is not received within seven days of email, customers are asked to call the Forest Regeneration Center. **We do not ship containerized seedlings. Containerized seedlings must be picked up at FRC.**

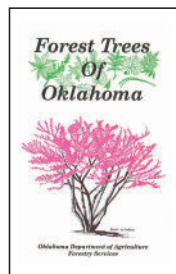
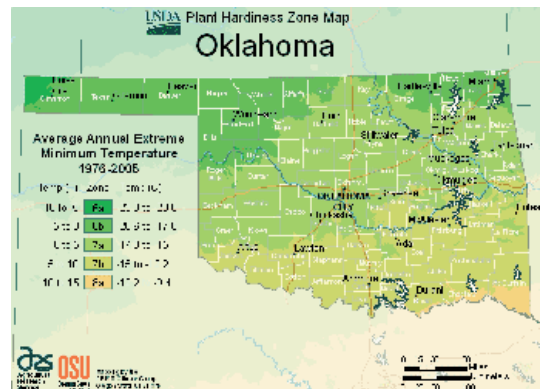
SPECIES SELECTION

Oklahoma Forestry Services recommends planting the right tree in the right place. Conditions that must always be considered are: the reason/purpose for planting the tree, type of soil, hardiness zone and amount of annual rainfall.

USDA Hardiness Zones

The primary guide to determine plant hardiness is the USDA Hardiness Zone Map, which divides the United States into ten zones based on average minimum temperatures. Each zone is then subdivided into A and B sections. A plant is said to be hardy if it can tolerate the lowest average winter temperature that occurs in a zone. Hardiness is affected by duration and intensity of sunlight; amount and timing of rainfall; length and severity of summer drought; soil characteristics; slope; frost occurrence; humidity; and cultural practices.

For more information or questions contact your nearest forester for advice. See back page for contact information.

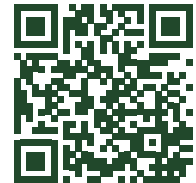


Forest Trees of Oklahoma

by Dr. Elbert Little

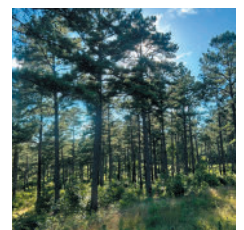
- If you pick it up, the cost is \$5.00.
- If we mail it to you, the cost is \$10.00.

Make Plans to visit our Forest Heritage Center in Broken Bow



SUPERIOR SOUTHERN YELLOW PINE GENETICS

The OFS Forest Tree Improvement Center (FTIC), located in Idabel, OK is home to 60 acres of superior pine genetic orchards. Since 1980, the FTIC has been focusing on loblolly, shortleaf, and Virginia pine genetics under the direction of the Western Gulf Forest Tree Improvement Program. These species have been studied and selectively bred to produce optimal seed for seedlings. We are offering landowners tailored options for their planting needs using our superior genetics. For more information, please call Randy Holeman 405-570-2804 or Justin Jones 580-495-8056.



BARE-ROOT SEEDLINGS

- Minimum bare root seedling order is 100 seedlings. Seedlings are sold in bundles of 50.
- Orders of 50 to 450 seedlings, seedling cost is \$1.00 each.
- Orders of 500 to 950 seedlings, seedling cost is \$0.60 each.
- Orders of 1,000 to 3,000 seedlings, seedling cost is \$0.50 each.
- Orders of more than 3,000 seedlings, seedling cost is \$0.45 each.

S=SUPERIOR G=GOOD F=FAIR P=POOR E=EAST W=WEST C-CENTRAL

Common Name (Scientific Name)	PLANTING CONDITIONS			Height At Maturity	COMMON USES		
	Hardiness Zones	Moisture Zones	Tolerates Soil Type		Windbreak	Erosion Control	Wildlife
Arborvitae (<i>Thuja orientalis</i>)	4-7	All	Dry, Clay	30-45'	S	P	S
Baldcypress (<i>Taxodium distichum</i>)	5-10	All, but Panhandle	Clay & Silt	60-100'	F	G	G
Chokecherry (<i>Prunus virginiana</i>)	2-6	All	Dry, Clay	15-20'	G	F	G
Dogwood, roughleaf (<i>Cornus drummondii</i>)	5-8	E, C	Most	8-10'	G	G	S
Juniper, Rocky Mnt. (<i>Juniperus scopulorum</i>)	3-7	All	Dry	25-30'	S	P	G
Locust, black (<i>Robinia pseudoacacia</i>)	4-10	All, but Panhandle	All	35-40'	G	S	G
Maple, Silver (<i>Acer saccharinum</i>)	3-9	All	Moist	50-60'	G	F	S
Mulberry, red (<i>Morus rubra</i>)	4-9	E, C	Most	40-60'	S	F	S
Oak, bur (<i>Quercus macrocarpa</i>)	3-9	All	Most	40-80'	G	F	S
Oak, chinkapin (<i>Quercus muehlenbergii</i>)	3-9	All	All	40-60'	G	F	S
Oak, Overcup (<i>Quercus lyrata</i>)	5-9	E	Moist	50-70'	G	F	S
Oak, shumard (<i>Quercus shumardii</i>)	3-9	All, but Panhandle	Most	100-120'	G	F	S

BARE-ROOT SEEDLINGS

S= SUPERIOR G=GOOD F=FAIR P=POOR E=EAST W=WEST C=CENTRAL

Common Name (Scientific Name)	PLANTING CONDITIONS				COMMON USES		
	Hardiness Zones	Moisture Zones	Tolerates Soil Type	Height At Maturity	Windbreak	Erosion Control	Wildlife
Oak, sawtooth (<i>Quercus acutissima</i>)	4-9	E, C	Most	50-60'	G	F	S
Oak, white (<i>Quercus alba</i>)	4-9	Most	Acidic Soils	70-90'	G	F	S
Osage Orange (<i>Maclura pomifera</i>)	5-9	All	Most	40-60'	G	G	S
Pecan, native (<i>Carya liliinensis</i>)	5-9	E, C	Needs Deep Soil	80+	G	P	S
Persimmon (<i>Diospyros virginiana</i>)	4-9	All, but Panhandle	Moist	40-60'	S	G	S
Pine, loblolly (<i>Pinus taeda</i>)	6-10	All, but Panhandle	Most	80-100'	F	F	F
Pine, ponderosa (<i>Pinus ponderosa</i>)	5-7	C, W	Dry	40-60'	S	F	G
Pine, shortleaf (<i>Pinus echinata</i>)	5-9	E, C	Sandy - Rocky	60-85'	S	F	G
Pine, Virginia (<i>Pinus virginiana</i>)	4-8	All	Dry	40-80'	G	F	G
Plum, American (<i>Prunus americana</i>)	3-8	All	Dry, Clay	15-20'	G	G	S
Southern Catalpa (<i>Catalpa bignonioides</i>)	6-8	All, but Panhandle	Moist	30-40'	S	G	G
Sugarberry (<i>Celtis laevigata</i>)	5-9	All, but Panhandle	Most	40-50'	G	G	S
Sumac, Fragrant (<i>Rhus aromatica</i>)	5-9	All	Dry	6-10'	S	G	G
Sumac, smooth (<i>Rhus glabra</i>)	3-9	All	Dry	10-15'	S	G	S
Sumac, winged (<i>Rhus copallinum</i>)	4-9	All	Dry	15-20'	S	G	S
Sweetgum (<i>Liquidambar styraciflua</i>)	5-9	E, C	Moist,	60-75'	G	G	G
Sycamore (<i>Platanus occidentalis</i>)	4-9	E, C	Wet, Clay	70-100'	F	G	F
Vitex (<i>Vitex agnus castus</i>)	5-9	All	Most	15-25'	F	F	S
Walnut, black (<i>Juglans nigra</i>)	4-9	E, C	Moist, Well Drained	80-100'	F	G	S

CONTAINERIZED SEEDLINGS

EVERGREEN CONTAINERS

Seedlings are grown in tubes that are 2 inches in diameter and 7.5 inches long. These seedlings are especially well-suited for plantings on harsher sites and should provide better survival than bare-root seedlings. The table below shows species available with descriptions and recommended usage. Containerized Species are \$2.00 per seedling. Minimum order is \$100.00. Seedlings are only sold in single species flats of 50. These seedlings are only available to pickup after March 1 at FRC.

Common Name	Hardiness	Moisture Zones	Tolerates Soil Type	Height At Maturity
Cypress, Arizona (<i>Cupressus arizonica</i>)	7-8	All	Most	40-60'
Pine, loblolly (<i>Pinus taeda</i>)	6-10	All, but Panhandle	Most	80-100'
Pine, ponderosa (<i>Pinus ponderosa</i>)	5-7	C, W	Dry	40-60'
Pine, shortleaf (<i>Pinus echinata</i>)	5-9	E, C	Sandy - Rocky	60-85'
Pine, Virginia (<i>Pinus virginiana</i>)	4-8	All	Dry	40-80'
Pine, Scotch (<i>Pinus eldarica</i>)	2-7	All	Dry	40-60'
Pine, Mondel (<i>Pinus sylvestris</i>)	6-8	All	Dry	30-50'



HARDWOOD CONTAINERS

Hardwood containers are grown for conservation plantings on smaller acreages. If you are planting a windbreak, wildlife habitat or any other conservation planting, the seedlings are just the ticket. They are grown in containers that are 2 5/8 inches in diameter and 10 inches long. These seedlings are \$5.00 each and are only available in flats of 25 per species. The minimum order is 25 trees. A flat of 25 costs \$125. FRC does not ship containerized seedlings. Containerized seedlings must be picked up at FRC within 30 days of notice.

Common Name (Scientific Name)	Hardiness	Moisture Zones	Tolerates Soil Type	Height At Maturity
Mexican Plum (<i>Prunus mexicana</i>)	6-8	All, but Panhandle	Most	15-20'
Oak, post (<i>Quercus muehlenbergii</i>)	6-9	All	All	40-70'
Oak, shumard (<i>Quercus shumardii</i>)	3-9	All, but Panhandle	Most	60-80'
Baldcypress (<i>Taxodium distichum</i>)	5-10	All, but Panhandle	Clay & Silt	60-100'
Sweetgum (<i>Liquidambar styraciflua</i>)	5-9	E, C	Moist	60-100'



CONSERVATION PACKAGES

We are offering five conservation improvement packages. Each contains 25 seedlings of four different species for a total of 100 seedlings. These trees and shrubs were selected specifically to enhance conservation practices. Some species will be substituted by FRC if a species is not available.



DEER HABITAT PACKAGE

(Osage Orange, Persimmon, Sawtooth Oak and Chinkapin Oak)

To learn more about becoming involved or helping with wildlife conservation efforts or projects, please visit: <https://www.okwildlifefoundation.org/>



WILDLIFE HABITAT PACKAGE

(Sugarberry, Shumard Oak, Smooth Sumac, Red Mulberry)

To learn more about managing and enhancing habitat for wildlife, please visit: <https://www.wildlifedepartment.com/lands-and-minerals/landowner-programs>



POLLINATOR PACKAGE

(Roughleaf Dogwood, Black Locust, Catalpa and Vitex)

For more information on beekeeping or the valuable roles pollinators play in our environment, please visit: <https://soonerbees.org/>



HERITAGE PACKAGE

(Bur Oak, Osage Orange, Persimmon and Black Walnut)

To learn the historical significance on why these tree species were selected, please visit: <https://www.okhistory.org/>



CARBON SEQUESTRATION PACKAGE

(Shumard Oak, Sweetgum, Shortleaf Pine and Silver Maple)

This starter package was designed to create awareness that encourages protection of water, soil, and air quality by planting trees that vastly sequester carbon. To learn more about the Oklahoma Carbon Program, please visit: <https://conservation.ok.gov/carbon-program-page/>



All Conservation Packages are \$125.00.



Oklahoma Forestry Services
Forest Regeneration Center
830 NE 12th Avenue
Goldsby, OK 73093



FOR FORESTRY ASSISTANCE, PLEASE CALL THE OFFICE NEAR YOU.

ag.ok.gov/shop

Forest Regeneration Center

830 NE 12th Avenue
Goldsby, OK 73093-9071
Office 405.288.2385

East Central Area (EC)

P.O. Box 297
Wilburton, OK 74578-0297
Office 918.456.2082
Fire 800.375.2056

State Offices (Western Area)

2800 N. Lincoln Blvd.
Oklahoma City, OK 73105
Office 405.522.6158

Southeast Area (SE)

P.O. Box 40
Broken Bow, OK 74728-0040
Office 580.584.3351
Fire 800.299.2468

Northeast Area (NE)

22082 South J.F. Davis Lane
Tahlequah, OK 74464-9805
Office 918.456.6139
Fire 800.299.3473

